

# Anssems

t r a i l e r s

## BSX





# BSX, the trailer for general use

Quality. In a word, that is the trademark of Ansems Trailers. Thanks to our experience for years on end we know as no other by who our trailers are used and what their wishes are. Our trailers for general use are a direct answer to all the wishes at which high priority is given to stability, safety, optimal payload, multifunctionality and user-friendliness. Advanced technologies have been used for the development of our trailers and, of course, they have been substantially tested, among others on a test course and a road simulator.

## Stability

The steel frame of the trailers is robot-welded and hot-dip galvanised. Because the V-shaped pole of trailers with a brake system consists of a box profile with a length of 145 cm they are very stable. The poles have been EC approved. Besides, the frame has been carried out with a solid ladder rack and railing. These also consist of a box profile. The result is a very



BSX 750.205



BSX 750.251



BSX 1300.205

stable frame at all times. We think this is important, because this is the basis of a good trailer.

The axles and coupling or the overrun brake that are mounted are of a high-grade quality. Upon choosing the axles, ample reserve has been provided for. Because of this the maximum gross weight of the axles is higher than the maximum gross weight of the trailer. Thus type BSX 1300 has been equipped with one axle with a gross weight of 1,500 kilos and BSX 2000 has been equipped with two axles with a gross weight of 1,300 kilos each.

But not only the gross weight is exceptional. The floor of the trailer, too, is extremely suited for any job imaginable. Two longitudinal runners and several cross girders carry one 15-mm wooden sheet, which provides a perfect support.

## Safety

Ansems Trailers feels very strongly about safety. Not only with respect to the solid construction of the trailer, but above all with respect to visibility to other road users. In order to achieve this the lighting, which is mounted in compliance with EC norms, has been added to by side marker lights. These lights are far better visible than reflectors. Moreover, upon designing, visibility with a folded down tailboard was taken into account as well. For example, if you have to load in darkness with a folded down tailboard the hazard lights are still visible. You are visible at all times with Ansems trailers, and that is a very safe idea, isn't it?



*Lighting visible with folded down tailboard*

## Optimal payload

Despite the strong steel frame the unladen weight of our trailers is remarkably low. The result is an optimal payload. The low unladen weight is realised by meticulously choosing the materials used for the trailers. These trailers for general use are equipped with aluminium sides, which resulted to a considerable reduction of weight.





Folded down headboard



Pullout beam at backside

### Multifunctionality

You can transport all sorts of loads with Ansems trailers for general use. The sides with a height of 35 cm allow for a high volume, so that loose items can be easily loaded. Carrying long items is not a problem either, because the headboard and the tailboard can be easily folded down.

The headboard rests on the pole, the tailboard on two pullout beams, while the lighting remains visible. Thus there is always ample space to safely transport long items and problems with trailers that are too short no longer exist. Talking about multifunctionality!

### User-friendliness

The solid ladder rack and railing offer a good and safe way to tie down your load. Several brackets have been mounted which can conveniently be used for tension bolts or rope. All these trailers are equipped with a jockey wheel. Trailers without a brake system are equipped with a normal jockey wheel, whereas utility trailers with brake system are equipped with a strong retractable jockey wheel. The jockey wheel makes hoo-



Normal jockey wheel



Retractable jockey wheel

king and unhooking easy and provides good manoeuvrability. Finally, besides their low weight the aluminium sides have another major advantage. They do not discolour, not even after years of usage. The trailer will keep its nice appearance throughout time. In short: you are worth being looked at with Ansems trailers.



Axle shock absorber (option)



BSX 1300.251



BSX 2000.251



BSX 2000.301



	BSX 750 205x120	BSX 750 251x130	BSX 1300 205x120	BSX 1300 251x130	BSX 2000 251x130	BSX 2000 301x150
<b>Dimensions/Weights</b>						
Maximum gross weight	750	750	1300/1000	1300/1000	2000/1500	2000/1500
Unladen weight	205	230	270	300	365	405
Payload	545	520	1030/730	1000/700	1635/1135	1595/1095
Internal platform length (A)	205	251	205	251	251	301
Internal platform width (B)	120	130	120	130	130	150
Loading height (C)	52	52	53	53	50	50
Pole length (D)	135	135	145	145	145	145
Overall length (E)	351	397	361	407	407	457
Overall width (F)	166	176	170	180	181	201
Overall height (G)	127	127	128	128	125	125
Height of sides (H)	35	35	35	35	35	35
Railing height (I)	45	45	45	45	45	45
Ladder rack height (J)	75	75	75	75	75	75
Tyre size	185/70R13	185/70R13	185R14	185R14	185/70R13	185/70R13
<b>Accessory</b>						
High cover 150 cm, with an internal height (K) of: and an overall height (L) of:	* 145 207	* 145 207	* 145 208	* 145 208	* 145 205	* 145 205
High cover 180 cm, with an internal height (K) of: and an overall height (L) of:		* 175 237		* 175 238	* 175 235	* 175 235
High cover 210 cm, with an internal height (K) of: and an overall height (L) of:						* 205 265
Flat cover	*	*	*	*	*	*
Axle shock absorber			*	*	*	*

\*Accessory is deliverable at the mentioned trailer.

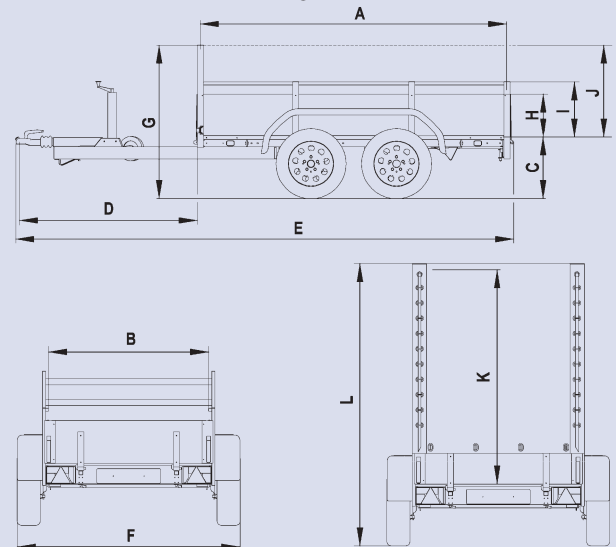
Dimensions mentioned in cm, weights in kilos.



High cover



Flat cover



Your Ansems dealer: